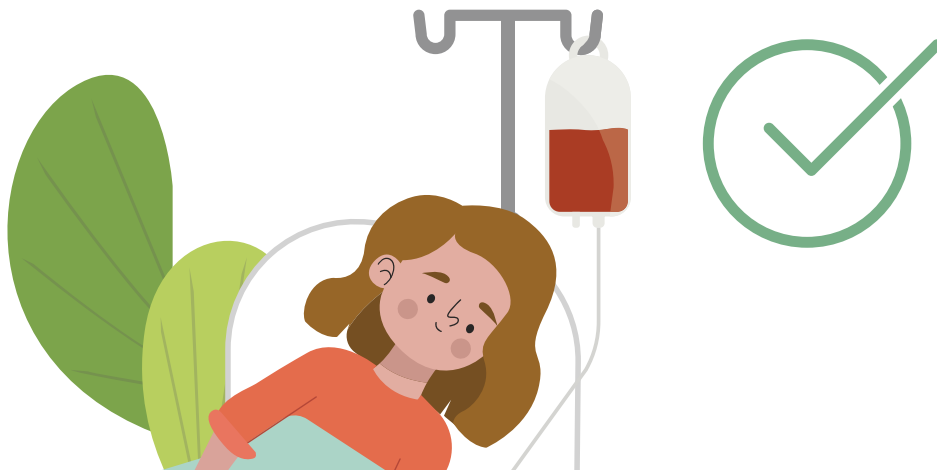




GIVING INPUT ABOUT FUNDING FOR NEW MEDICAL SERVICES (NOT MEDICINES)



Medical services can be publicly funded so that you can access them at a much lower cost and sometimes for free.

An independent committee called the Medical Services Advisory Committee (MSAC) advises the Australian Government about which services should be funded on the Medicare Benefits Schedule (MBS) and other programs (such as blood products or screening programs). It does this by assessing the best available evidence of a medical service's safety, clinical effectiveness, cost-effectiveness and total cost compared to an existing service for a condition.

But not everything that matters to you may be in that evidence. The experience of living with a condition or caring, supporting or advocating for people with a condition may mean you have important insights that could help the committee give better informed advice.

PROCESS FOR DECIDING WHAT TO FUND

When someone (usually a medical device or biopharma company) applies to MSAC to have a medical service recommended for public funding, it can be seen by up to three committees:

1

PICO Advisory Sub Committee (PASC) which gives advice about the key questions the assessment should address. This includes confirming who the medical service is for (Population), what it is and how it works (Intervention), what alternative it will be compared to (Comparator) and what it can do (Outcomes). Not all applications go to PASC.

2

Evaluation Sub-Committee (ESC) which gives advice about the quality and usefulness of the evidence, as well as what may be missing from it. Not all applications go to ESC.

3

MSAC discusses the evidence and impacts of funding the new medical service and advises the Australian Government that it either supports funding it, does not support funding it or it needs more information before giving its advice (defer consideration).

The Minister of Health must then agree to fund it before it can be put on the MBS.

TWO KEY TIMES FOR GIVING INPUT

WHEN: BEFORE PASC

WHAT:

You could submit information from your personal experience or information collected about the experiences of those you represent. Start by looking through the Application Form to see what is proposed by the applicant.

- **Who** the intervention is for: You might agree with how it is stated in the application or you might want to add a group with a high need that has not been included
- **Benefits** you want from the medical service
- **Side effects** from it or other **quality of life impacts** you would not want
- If you've used the medical service, what you **liked and disliked** about it and the process for getting it
- Any **other benefits or disadvantages** with this medical service for patients beside the impacts on their health
- If you haven't used the medical service, what you **like and dislike about your current** or most recent treatment and the process for getting it
- **Other services** that should be given to support having this medical service
- Views on the **comparator**, including why some patients may not be able to access it
- **Outcomes** that matter most to you in any new medical service
- **Financial implications** of receiving your current or most recent treatment (such as out of pocket costs, time of work, travel, support)

HOW:

- You can use the survey on the [site](#) or [email](#) your input

WHO:

- Anyone, but especially patients, their loved ones, carers and patient organisations

TIPS:

If you like to read, look at the 'Application document' available on the [web](#). Then you can make comments about it if you like.

[Email](#) the Consumer Evidence and Engagement Unit for specific advice.

For more ideas, check out the [Patient Voice Initiative Resource Library](#) or drop us an [email](#)

WHEN: BEFORE MSAC

WHAT:

Submit any new information you have collected to address a gap in the evidence identified back at the PASC stage.

If you gave input before PASC you could:

- Check the **PICO Confirmation** to see if anything has been missed or misunderstood
- Add any new information you may have on the population or outcomes or any other aspects that are important to patients

If you haven't given input on this topic before, look through the dot points in the left column. You could:

- Write about one or more of these issues based on **your experience** of living with the condition or caring for someone with it
- Share **your story** and why funding or not funding this medical service matters to you
- **Submit information** based on the experiences of the patients and carers you represent.

HOW:

- [Email](#) your input

WHO:

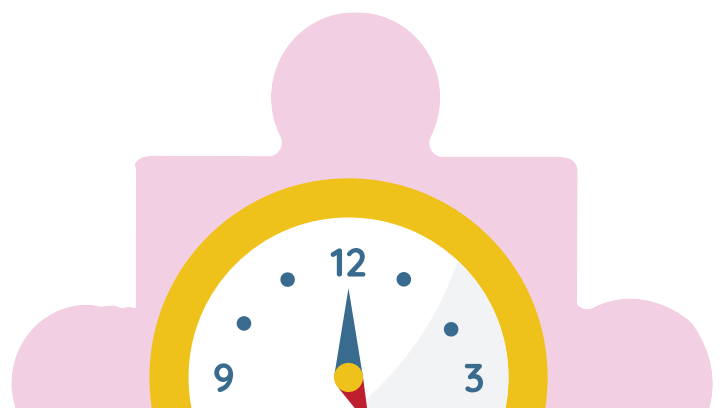
- Anyone, but especially patients, their loved ones, carers and patient organisations

TIPS:

If you like to read, look at the 'PICO Confirmation' available on the [web](#). Then you can make comments about it if you like.

[Email](#) the Consumer Evidence and Engagement Unit for specific advice.

For more ideas, check out the [Patient Voice Initiative Resource Library](#) or drop us an [email](#)



THE QUICK GUIDE TO HOW MEDICAL SERVICES AND BLOOD PRODUCTS BECOME PUBLICLY FUNDED

